



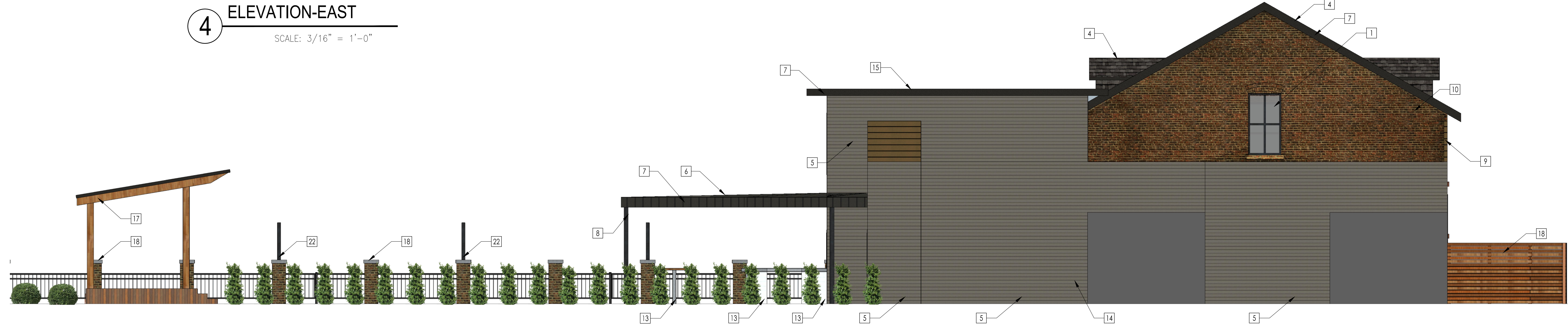
**4** ELEVATION-EAST  
SCALE: 3/16" = 1'-0"

**KEYNOTES**

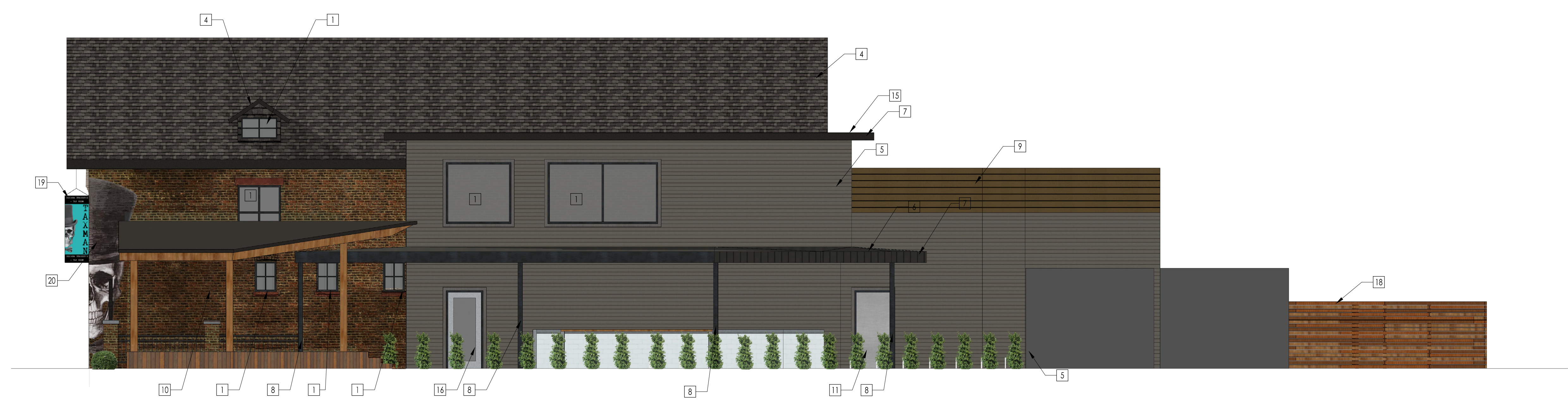
- 1 STOREFRONT SYSTEM—ANODIZED BLACK, LIGHT GREY GLAZING WITH REFLECTANCE 8%, TRANSMITTANCE: 50%
- 2 NONE
- 3 "GARAGE" DOOR WITH BUILT-IN INDIVIDUAL DOOR
- 4 ASPHALT SHINGLE ROOF SYSTEM (GREY MIX)
- 5 CEMENT CLADDING SYSTEM (LIGHT MIST)
- 6 STANDING SEAM METAL ROOF SYSTEM
- 7 METAL FASCIA (DARK GREY)
- 8 STEEL COLUMN (DARK GREY)
- 9 CEDAR SCREEN
- 10 EXISTING BRICK
- 11 EXTERIOR DOOR
- 12 METAL FRAME
- 13 BAR
- 14 ALUMINUM SHIPS LADDER
- 15 TPO ROOF SYSTEM
- 16 ALUMINUM STOREFRONT DOOR
- 17 STAGE
- 18 ARCHITECTURAL METAL FENCE W/ BRICK PILASTER
- 19 SIGN (3'-6" X 8'-CA 2.5.1—INCORPORATED SIGN DESIGN )
- 20 PRINTED SIGN (5'-6" X 17'-11", CA 2.5.7— SIGN DESIGNED CREATIVELY AND ARTISTICALLY)
- 21 DOWN SPOUTS
- 22 METAL POST

**GENERAL NOTES**

1. SEE MEP DRAWINGS FOR EXTERIOR LIGHTING AND EQUIPMENT PLACEMENT



**3** ELEVATIONS-WEST  
SCALE: 1/8" = 1'-0"



**2** ELEVATIONS-NORTH  
SCALE: 1/8" = 1'-0"



**1** ELEVATIONS-SOUTH  
SCALE: 1/8" = 1'-0"

**LANCER + BEEBE**  
719 E. New York Street  
Indianapolis, IN 46202

TAXMAN CITYWAY  
GASTROPUB AND BEER GARDEN  
310 S DELAWARE STREET  
INDIANAPOLIS, IN 46204



PROJECT: #18128  
CONSTRUCTION DOCUMENTS  
DATE: 01-25-2019

COLORED ELEVATIONS WITH BRICK COLUMN FENCE

**A200**